



## Budget Wizard

### BENEFITS

- Huge time savings over manual budget entry.
- Extremely easy to use
- Very easy to customise
- APIs available for upload, download, and custom SQL.
- Hundreds of lines uploaded per second.
- Instant feedback of errors and upload status.

*Budget Wizard allows you to upload and download your budgets to and from the Oracle Projects module using Excel. It is robust, extremely fast and immensely flexible. It supports all possible Budget Entry methods, and the Plan Types introduced in 11.5.9. The advanced download feature allows you to retrieve existing budgets and actuals, letting you create forecasts in the minimum possible time, with all the power of Excel at your disposal for manipulating your data. Combine the ultimate “what if?” tool with the smoothest integration possible to Oracle Projects.*

### FEATURE OVERVIEW

- Based on MS-Excel
- Forms assist with data entry, validation and error correction
- All varieties of Budget Entry Method supported
- Plan Types supported
- Advanced download capability including Actuals
- Can operate as an Excel Addin with your own custom front end

BUDGET TYPES			UPLOAD RESULTS			PROJECT	BUDGET LINE DETAILS and NON TIME-PHASED AMOUNTS							
Budget Type	Entry Method	Resource List	Upload Ok	Line Ok	Upload Error	Project Number	Task Number	Resource Grp	Resource	Amount Type	Amount	Date Range Start	Date Range End	Line
Approved Revenue By Lowest Tasi Organization by			OK	OK		Cost Plus	1.1.1	Consulting-East	Chargebacks	Revenue	15,000	03-Jan-1997	31-Dec-2001	
			OK	OK				Consulting-East	Contractor	Revenue	20,000	03-Jan-1997	31-Dec-2001	
			OK	OK				Consulting-East	Expenses	Revenue	50,000	03-Jan-1997	31-Dec-2001	
			OK	OK				Consulting-East	Labor	Revenue	550,000	03-Jan-1997	31-Dec-2001	
			OK	OK			1.1.2	Consulting-East	Chargebacks	Revenue	100,000	03-Jan-1997	31-Dec-2001	
			OK	OK				Consulting-East	Contractor	Revenue	40,000	03-Jan-1997	31-Dec-2001	
			OK	OK				Consulting-East	Expenses	Revenue	40,000	03-Jan-1997	31-Dec-2001	
			OK	OK			1.2	Consulting-East	Labor	Revenue	350,000	03-Jan-1997	31-Dec-2001	
			OK	OK				Consulting-East	Chargebacks	Revenue	100,000	03-Jan-1997	01-Dec-2001	
			OK	OK				Consulting-East	Expenses	Revenue	2,750	03-Jan-1997	01-Dec-2001	
			OK	OK				Consulting-East	Labor	Revenue	350,000	03-Jan-1997	01-Dec-2001	
			OK	OK			2.0	Consulting-East	Chargebacks	Revenue	650,000	03-Jan-1997	31-Dec-2001	
			OK	OK				Consulting-East	Contractor	Revenue	30,000	03-Jan-1997	31-Dec-2001	
			OK	OK				Consulting-East	Expenses	Revenue	27,250	03-Jan-1997	31-Dec-2001	
			OK	OK				Consulting-East	Labor	Revenue	125,000	03-Jan-1997	31-Dec-2001	
			OK	OK			3.0	Consulting-East	Contractor	Revenue	25,000	03-Jan-1997	31-Dec-2001	
			OK	OK				Consulting-East	Labor	Revenue	125,000	03-Jan-1997	31-Dec-2001	
Approved Revenue By Lowest Tasi Expenditure Category						Cost Reimburs	1.1.1		Chargebacks	Revenue	20,000	03-Jan-1997	30-Dec-2001	
									Contractor	Revenue	9,000	03-Jan-1997	30-Dec-2001	
									Expenses	Revenue	10,000	03-Jan-1997	30-Dec-2001	
									Labor	Revenue	100,000	03-Jan-1997	30-Dec-2001	
							1.1.2		Chargebacks	Revenue	6,500	03-Jan-1997	30-Dec-2001	
									Contractor	Revenue	14,889	03-Jan-1997	30-Dec-2001	
									Expenses	Revenue	5,000	03-Jan-1997	30-Dec-2001	

### ARCHITECTURE

- Any version of MS-Excel from Excel 97 to XP
- Uses Applications function security
- No client install

**BUDGET HEADER**

- Only necessary once per sheet
- Pop-up calendars for dates
- All LOV fields validated
- Fields colour coded to indicate if mandatory or optional
- Optional columns can be deleted
- All columns may be repositioned and hidden
- You may even have Budget Types and Plan Versions on the same worksheet !!

**Budget Header Settings**

Budget Type: Approved Cost Budget

Budget Entry Method: By Lowest Task, Date Range (Rev)

Resource List: Expenditure Category

Version Name: Change Order #3

Change Reason: [Empty]

Description: Client CO#3 for additional work and price adjustr

Buttons: Continue, Cancel

**Plan Version Settings**

Plan Type: Approved

Plan Setup: Cost and Revenue Separately

Version Name: AC Budget

WBS Level: Top Task

Time Phasing: None

Resource List: None

Change Reason: Contract Variation

Description: [Empty]

Cost: Top Task

Revenue: Lowest Task

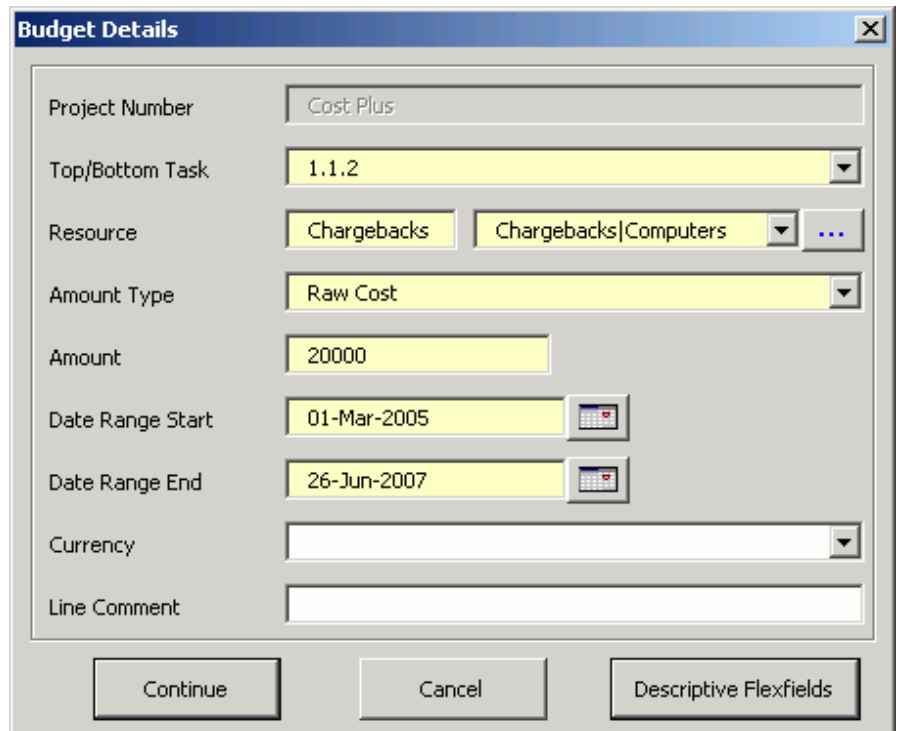
GL Period: [Empty]

Expenditure Categ: [Empty]

Buttons: Continue, Cancel

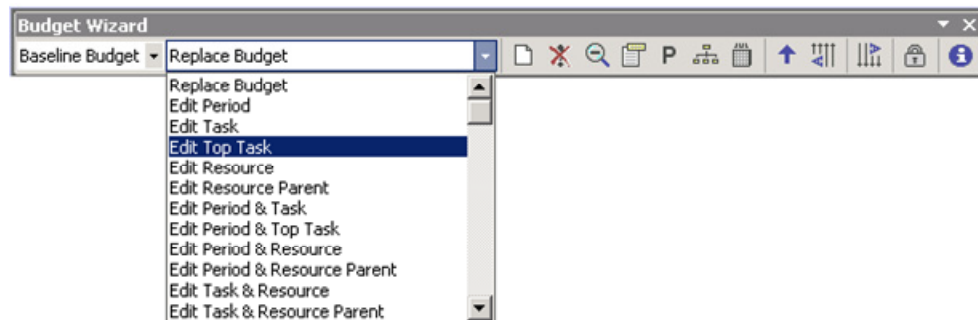
**BUDGET DETAILS**

- Search facility for Resources.
- Drop down LOVs for Tasks, Resources, Currencies
- Pop-up calendars for dates.
- Forms Support for Descriptive Flexfields
- Multiple options for using Resource Lists



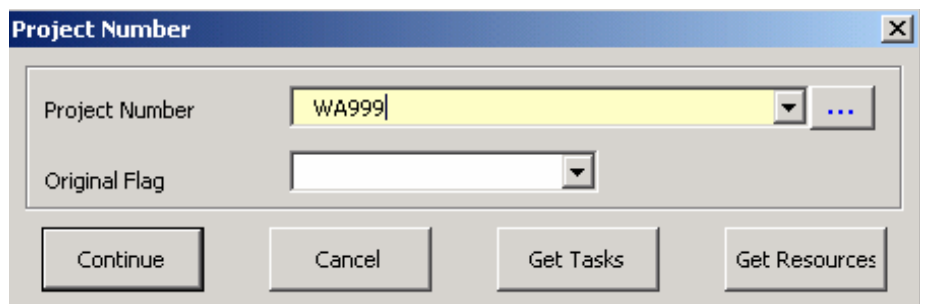
**UPLOAD OPTIONS**

- Easily select replace or edit combination upload options
- Choose to baseline if required



**PROJECT FORM**

- Select project number from validated LOV
- Use to populate tasks and resources directly into the spreadsheet from the existing Project information



**COMPREHENSIVE DOWNLOAD FACILITY**

- The easiest way to modify a budget is to download it, modify it, and re-upload it
- Form offers many criteria and options for controlling the download
- Actuals download allows you to select Actuals, Budget, or both
- Additional columns allow you to break down Actuals by Expenditure Type and Non-Labor Resource

Visit us at <http://www.more4apps.com> to download the trial version.

Write to us at [info@more4apps.com](mailto:info@more4apps.com) for a free short term licence key to help with your trial.